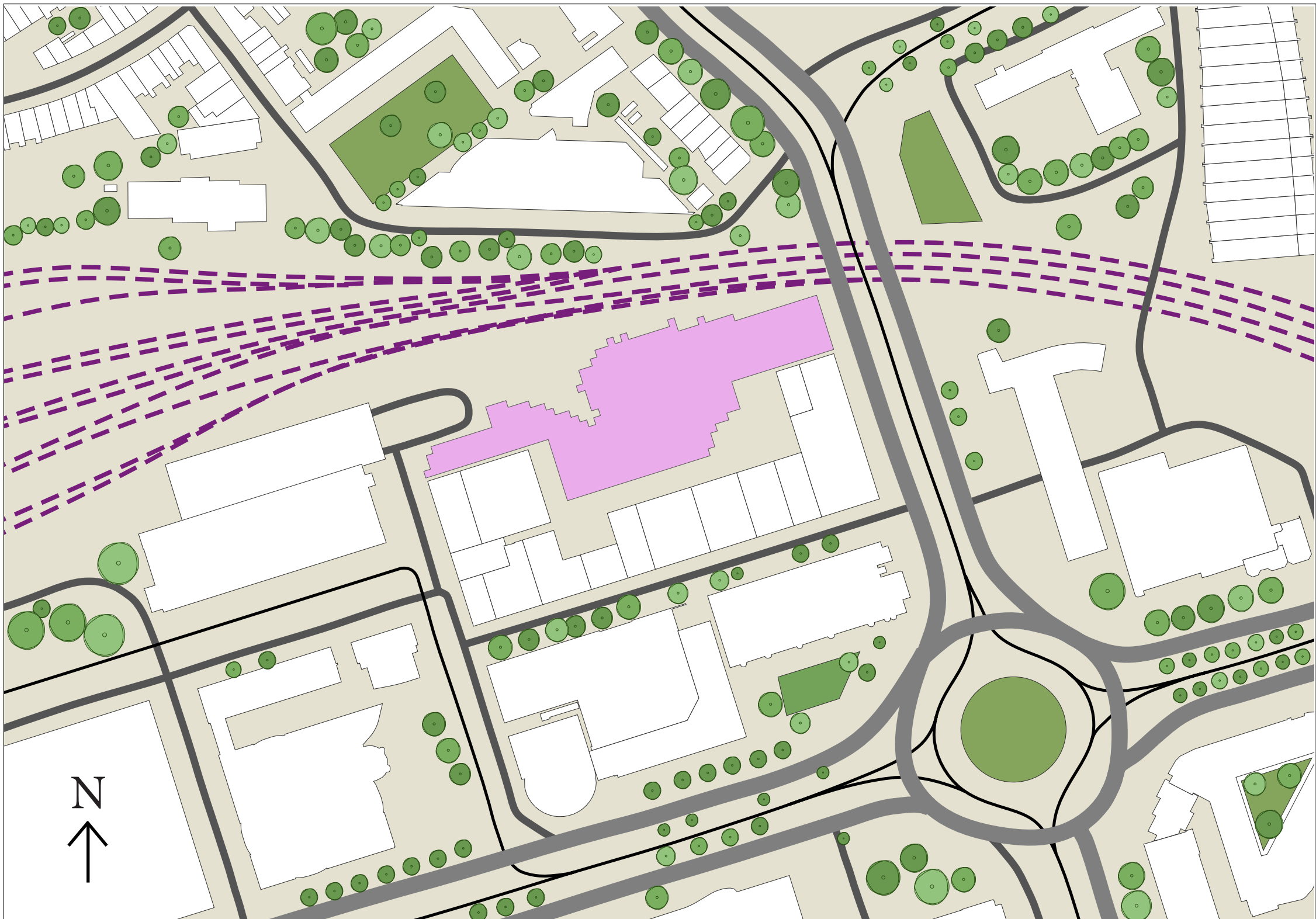


AFFINITY

Procedural Generation to Enhance Schiestraat 11 in Rotterdam

ALCH ARCHITECTS



Urban Plan 1:2000



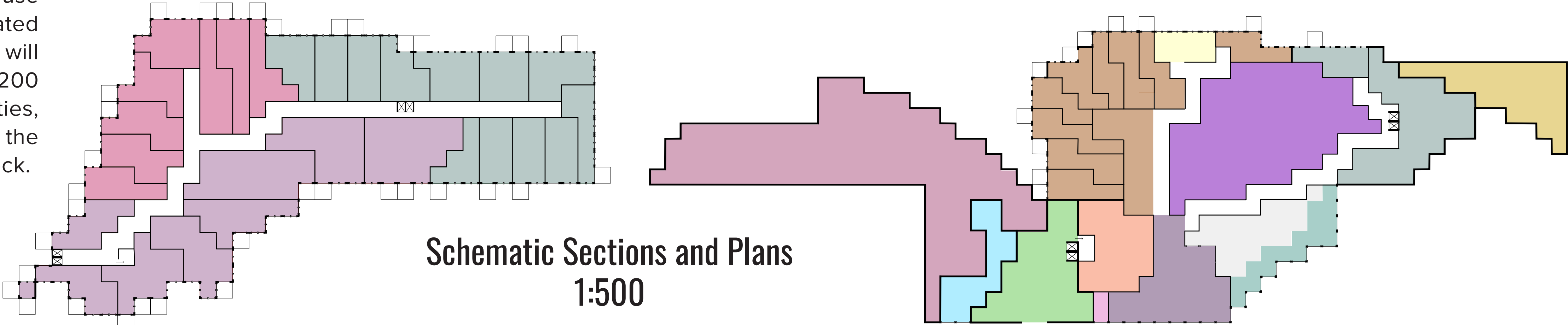
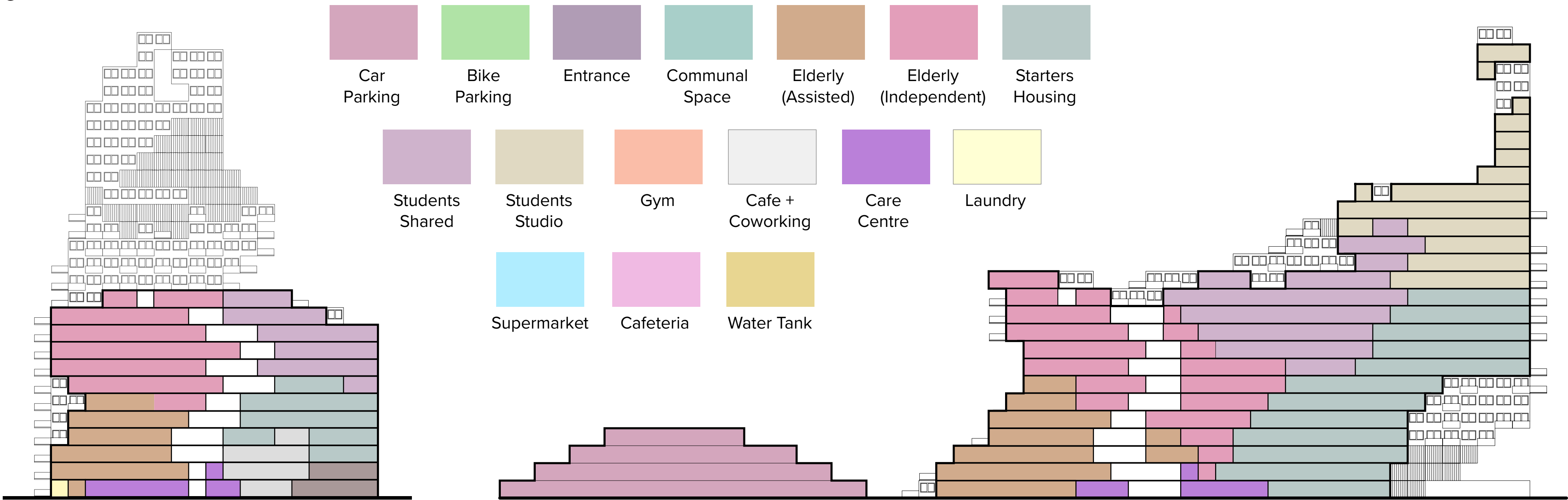
Renders

Project Overview

To expand the current Schieblock in Rotterdam, we make use of procedural design to implement a new community-orientated sustainable building. Our proposed building, AFFINITY, will provide 400 homes for students, 200 homes for elderly, and 200 homes for starter families. Through publicly accessible facilities, like a gym, supermarket, or cafe, our building expands upon the idea of a community gathering point of the current Schieblock.

To optimize the our project has four main goals:

- 1. Integrating Community
- 2. Enhancing Sustainability
- 3. Maximizing the Sunlight to all Functions
- 4. Minimizing Noise Pollution



Schematic Sections and Plans
1:500